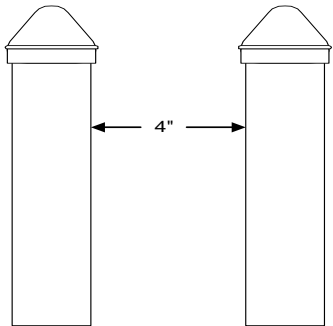


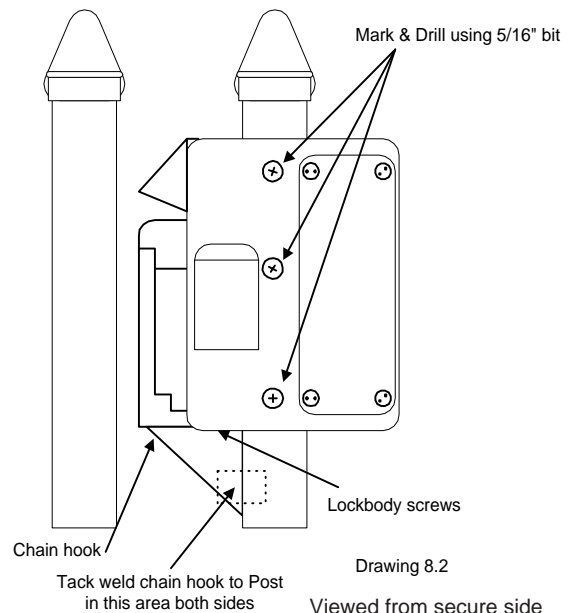
INTELLIKEY™ Gate Lock Installation



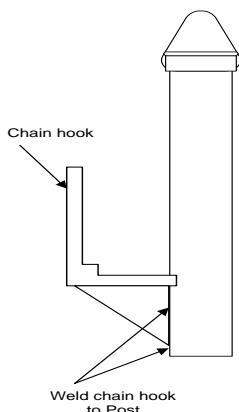
Drawing 8.1

Prior to the installation you must check to see that there is a unobstructed clearance of no less than 4" between the posts, and that the Gate Lock has been programmed with the proper access information.

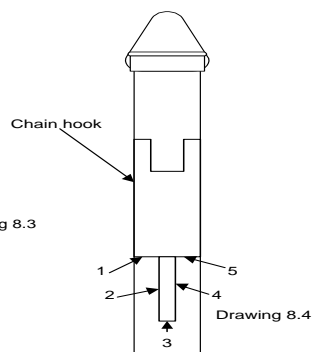
Holding the Gate Lock with the controller housing on the secure side of the sliding or swinging part of the gate (not the fixed side) and parallel to the gate fencing, mark the three (3) 1/4" bolt holes. Drill these holes using a 5/16" bit. Loosely fasten the Gate Lock with the bolts provided. Next tack weld the chain hook to the post. Please refer to drawing 8.2. Now remove the lock body screws and the controller. The chain hook should be tack welded to the gate post.



Drawing 8.2



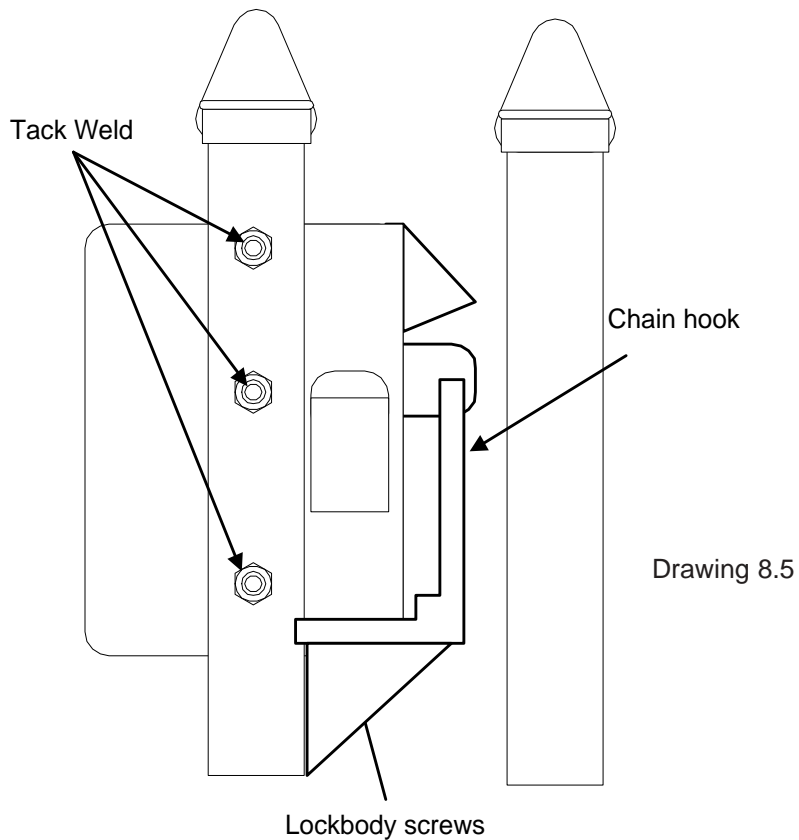
Drawing 8.3



Drawing 8.4

With the controller removed, the chain hook can be welded to the gate post. Weld just the chain hook support bracket at the five (5) points. Please refer to drawing 8.3 and 8.4 for correct welding locations.

Next reinstall the controller using the three (3) stainless steel lock body screws and the three (3) 1/4" stainless steel bolts with the screw heads on the secure side of gate. **DO NOT TIGHTEN** screws and bolts at this time. Test the lock with a key. If the Gate Lock functions properly then tighten the three (3) lock body screws and then the three 1/4" bolts. After the screws and bolts are tight, tack weld the bolt and nut being careful not to weld to the post. Please refer to drawing 8.5.



The INTELLIKEY Gate Lock is now installed. The last thing to be done is the installation of a loop of chain or steel cable to the fixed side of the gate opening. When installing this loop allow enough slack for misalignment in gate. For long term operation the Adams Rite lock supplied with the INTELLIKEY Gate Lock must be lubricated every 3 months using Corrosion Block, INTELLIKEY part number 100795.

Please note: If the chain hook is not welded to the gate as per the instructions you could have a serious security problem.

INTELLIKEY Corporation
4325 Woodland Park Drive
Suite 102
West Melbourne, FL 32904

Phone: 321-724-5595
Fax: 321-724-5695
email: techsupport@intellikey.com
Internet: www.intellikey.com